

MINISTRY IMPACT REPORT

CALLED TOGETHER | CALLED TO CARE



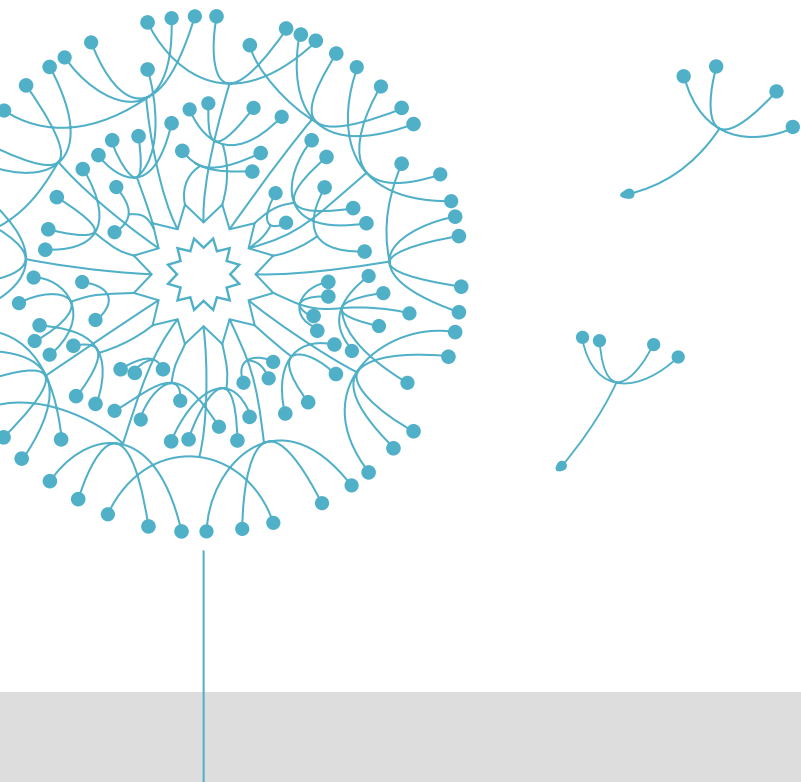
National
Benevolent
Association

of the Christian Church (Disciples of Christ)

Letter from the President



"More than 130 years ago, our six founding Disciples women advocated on behalf of children and elders in need—and we have not stopped. As the NBA, and as people of faith, we seek to intentionally address the health and social service issues that impact our partners and the communities in their midst."



Dear Friends,

Reflect. Engage. Repeat.

As the health and social services general ministry of the Christian Church (Disciples of Christ), these words carry powerful meaning for us. As the NBA, and as people of faith, we actively reflect: **through what justice issues and areas of care can we be making a positive difference?**

This year, we are living into a new NBA strategic plan, which will guide our work for the coming years. With our last strategic plan, we developed the NBA XPLOR program, a prophetic movement that accompanies and supports young adults considering lives of care and service. We celebrate welcoming the fifth cohort of young people this fall, and with our new strategic plan we will launch XPLORmore. With our last plan, we created the NBA Incubate Initiative, supporting new and forward-leaning health and social service nonprofits; we introduced the NBA Mental Health Initiative, which provides expert resources and nurtures innovative mental health ministries in Disciples congregations and regions; and we commenced hosting NBA Affinity and Peer Groups for clergy and lay leaders on issues such as prison and jail ministries, mental health and congregational care, development and marketing for nonprofits, and nonprofit executive leadership.

MISSION STATEMENT: Following God’s call, the National Benevolent Association exists to inspire and connect the people and ministries of the Christian Church (Disciples of Christ), to accompany one another in the creation of communities of compassion and care, and to advocate for the well-being of humanity.

The fullness of NBA’s ministries of compassion and care will both expand and focus in the work we have already begun. An area of growth that inspires and excites me is our strategic priority to deepen our engagement in advocacy and activism in order to transform the root causes of social injustice. In so many ways, NBA’s history centers on the act of advocating and responding to God’s call for us to support, champion, and accompany. More than 130 years ago, our six founding Disciples women advocated on behalf of children and elders in need—and we have not stopped. As the NBA, and as people of faith, we seek to intentionally address the health and social service issues that impact our partners and the communities in their midst.

The rhythm of reflection and engagement (then repeat!) is significant in the work we do each day. We say thanks for each and every person who is part of this shared calling to care, and we invite others to consider ways of engaging with us.

In loving service,



MARK D. ANDERSON
President and CEO



Mission and Ministry Grants



Clockwise from top: Wilksburg Youth Collaboration, Disciples Personal Care Pantry, The Bet Away Group, Community in Action, Rise Up Project.

“With the barrage of gambling activities that have come to Northeast Ohio, we have been called to address how seniors are targeted by casinos, resulting in gambling addictions.”

The Bet Away (Better Way) Group, Heights Christian Church, Shaker Heights, OH

Since NBA’s founding, a core focus of our outreach has been with older adults and at-risk children and youth. In 2017-18, the NBA launched a **Mission and Ministry Grant Program**, awarding \$150,250 to 21 Disciples congregations and health and social service ministries working and serving with those communities.

Through purpose-restricted funds that date back several decades, these grants would not be available without the generous foresight of NBA’s faithful donors. This program ensures that our donors’ intentions from decades ago are fulfilled in meaningful, relevant ways in today’s context. “We are grateful to facilitate this new granting process—a significant infusion of direct dollars to Disciples ministries,” says Rev. Rebecca Hale, NBA Executive Vice President, “and we are eager to see what growth, learning, and impact are possible throughout the church with the help of these funds!”

“We discovered our church was uniquely prepared to welcome children with special needs and their families, with inclusiveness of the table being lived out.”

RISE (Respect, Include, Support, Embrace) and SHINE (Supporting Hearts in New Experiences), First Christian Church, Midland, TX

Learn more about our current grantees and how to apply at nbacares.org/grants!



"It's not the size of the church that matters. It's the size of the church's heart."

Disciples Personal Care Pantry, First Christian Church, Burkburnett, TX



Grantees Receiving Funds for 2018

Grantee Project

Organization/Congregation

Catalyst Grants (\$1,000 - \$5,000)

| | |
|--|---|
| Camp Sunflower | Pine Valley Christian Church (Disciples of Christ), Wichita, KS |
| Community Dinner Kitchen Skills Training | University Place Christian Church, Champaign, IL |
| Creation of Space for Children and Families with Special Needs | First Christian Church, Edmond, OK |
| Disciples Personal Care Pantry | First Christian Church, Burkburnett, TX |
| Expanded Kitchen at The Dinner Table | Good Shepherd Christian Church (Disciples of Christ), Macedonia, OH |
| Gathering Space | Disciples Christian Church, Cleveland Heights, OH |
| Health and Wellness for Seniors through Technology | Bethel Christian Church, Jonesborough, TN |
| Hope Academic / Tutoring Services (H.A.T.S.) | Hope Christian Church, Hammond, IN |
| JUMPSTART Back-to-School Clinic | First Christian Church (Disciples of Christ), Blue Mound, IL |
| Living Your Life: Coping with Depression and Anxiety | First Christian Church, Salida, CO |
| RISE (Respect, Include, Support, Embrace) and SHINE (Supporting Hearts in New Experiences) | First Christian Church, Midland, TX |
| Rise Up Project | 15th Avenue Christian Church, Rock Island, IL |
| S.M.A.R.T. Academic and Enrichment Outreach Program | Shalom Community Christian Church, Inc., Greensboro, NC |
| The Bet Away (Better Way) Group | Heights Christian Church, Shaker Heights, OH |

Innovation Grants (\$6,000 - \$15,000)

| | |
|--|---|
| A Partnership of Caring | Christian Temple, Catonsville, MD |
| Friends Helping Friends | Juliette Fowler Communities, Dallas, TX |
| Kitchen Apprenticeship Program at Sanctuary Cafe for Opportunity Youth | University Christian Church, Chicago, IL |
| Specialized Education for Abused, Neglected, and Traumatized Children | Tennyson Center for Children at Colorado Christian Home, Denver, CO |
| Wilkinsburg Youth Collaboration Focused on Life Skills and Arts Engagement | Christian Church of Wilkinsburg, PA |
| Young Change Makers | Community of Just Love, Houston, TX |

Impact Grant (\$20,000+)

| | |
|---|---|
| Community in Action: Each One Teach One | Snow Hill Christian Church/Lowndes County Community Life Center, Fort Deposit, AL |
|---|---|

Incubate



Highlights from the 2018 NBA Incubate Retreat in Scottsdale, AZ.

"I am restored with momentum to keep moving forward. This retreat is equipping social entrepreneurs through self-care and spiritual practices that strengthen us to face all that is before us."

Rev. Syvoskia Bray Pope, Empower Hope Center, Louisville, KY

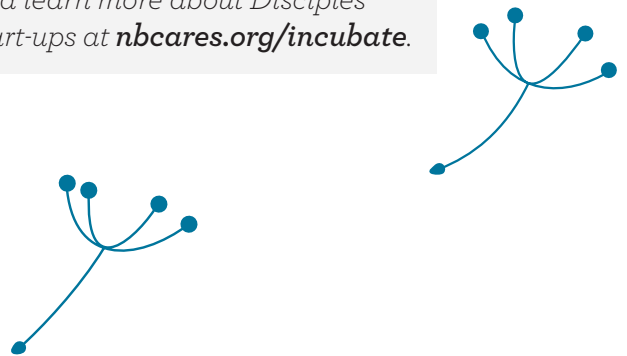
The NBA *incubates* new ministries, empowering Disciples social entrepreneurs and their projects to focus on growth, strengthen their impact, and plan for appropriate sustainability.

Equipping for Ministry Includes Rest and Renewal

Our annual **SENT Seminar** brings together Disciples-related health and social service ministry start-ups to learn and share in a variety of topics, including leadership coaching, legal principles for faith-based entities, marketing, and fundraising. After completing SENT Seminar, these *Incubate Participants* can access a variety of supportive resources for the next year, including our annual **Incubate Retreat**.

We often wonder, "What if we actually got away to rest, to pray, to find refuge, to have a moment to catch up with ourselves?" The Incubate Retreat offers just that—creating intentional space for rest, renewal, and equipping for the ministry of social entrepreneurship.

Find social enterprise resources and learn more about Disciples start-ups at nbcares.org/incubate.



“The Incubate Retreat was a time for needed rest, and it was a joy meeting some new and inspiring people.”

Rev. Dean Bucalos, Executive Director, Mission Behind Bars and Beyond, Louisville, KY



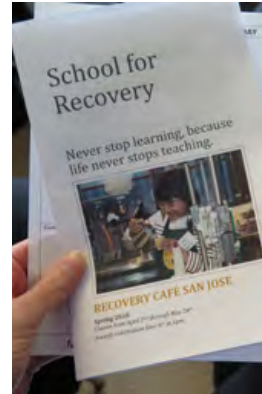
“Humbly Asking for Help Leads to Our Greatest Joy”

Incubate Participants who are interested in a longer-term relationship with NBA can apply to become an *Incubate Partner/Affiliate*. We help these entities strategically strengthen areas such as board development, capacity building, administrative mentoring, marketing and communications, fundraising and development, bookkeeping services, sustainability, Disciples relationships, and more.

Recovery Café San Jose, a recent Incubate Partner, is a healing community for those traumatized by addiction, homelessness, and mental health challenges. Housed within First Christian Church of San Jose, the Café provides a safe, sober, and supportive environment with a variety of programs, services, and connections to community resources.

“When you step out in faith to start a nonprofit, it’s not long before you find out how much you don’t know, and how many things you don’t do well. ... The miracle is this—through asking others for help, we have met board members, volunteers, and donors who have walked the precipice of addiction with their own children and families. Being involved brings them, and all of us, a sense of being truly connected to one another. So, we live in this irony: our need to humbly ask for help leads to our greatest joy.”

Rev. Dana Bainbridge, Founder and Development Officer, Recovery Café San Jose, CA



Highlights from NBA’s March 2018 visit to Recovery Café San Jose, CA.

Initiate



The NBA *initiates* ministries designed to establish and grow partnerships with health and social service supporters and providers—like **NBA XPLOR**, a 10-month, congregationally hosted residency program designed for young adults exploring a life of faith and the work of justice.

Four Cornerstones of NBA XPLOR:

1. Hands-On Service/Justice Work
2. Simple Living in Community
3. Spiritual Discernment on Vocation
4. Disciples Leadership Development



2018 NBA XPLOR Reunion; Leaders from North Hill Christian Church, Spokane, WA.

“The four cornerstones of the XPLOR experience have changed every aspect of my life. A word we use in XPLOR is intention, and I live my life so intentionally. I’m so grateful I ever got this opportunity, and I will live with this for the rest of my life.”

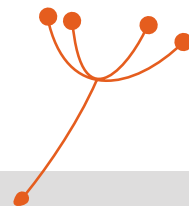
Tim Campbell, 2016-17 NBA XPLOR Resident in North Hollywood, CA; from Guelph, Ontario, Canada

NBA XPLOR Host Sites: Ebb and Flow

Over the years, some locations of our NBA XPLOR host sites have shifted, as the program grows and responds to the needs of our Disciples communities and regions. For 2018-19, we are pleased to welcome **XPLOR Spokane**, a partnership with North Hill Christian Church, Country Homes Christian Church, and the Northwest Region of the Christian Church (Disciples of Christ)!

So far, three sites have concluded their partnership with XPLOR: Quad Cities, IL/IA; and North Hollywood and Golden Gate, CA. We are grateful for the transformational experiences they have provided with young adults. Our thanks to everyone working with the local host teams to make these communities possible!

Learn more about the XPLOR Residency and how to apply at nbacares.org/xplor.



“Thank you to everyone who helps with XPLOR! You are bringing people together to make connections.”

Elsie Almodovar-Reyes, 2015-16 NBA XPLOR Resident in North Hollywood, CA; from Toledo, OH



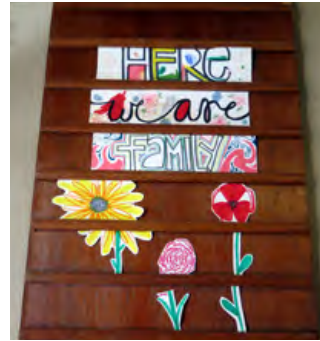
“Creating a Village of Mutual Care and Concern”

As the Residency begins its fifth program year in August 2018, we are excited to launch **XPLORmore**. This special opportunity is for Residents who have gone through XPLOR already, to have another, *new* experience going deeper into the program’s four cornerstones.

NBA XPLOR is collaborating with NBA Incubate Partner **QC Family Tree** in Charlotte, NC, for an intensive learning-by-living model of “ministry in place.” Two XPLORmore Residents (“R2s”), ages 21-30, will be placed in this setting for 2018-19. R2s will live on the QC Family Tree campus and may work in a multitude of settings: working with neighborhood youth, helping to plan semi-monthly community dinners and weekly “devos,” or assisting with the West Side Community Land Trust. Additional opportunities include on-site urban gardening, a pottery studio, art and yoga classes, helping maintain the community’s Airbnb, and more.

“We’re trying to figure out, ‘How can we live into a way of abundance, out of a way of scarcity? How can we do that creatively and faithfully?’ We’re creating a village of mutual care and concern. We’re cultivating community in a post-Christian era. That’s quite a big challenge, and it’s quite a joyful ride.”

Rev. Helms Jarrell, Co-Founder of QC Family Tree, Charlotte, NC



Highlights from QC Family Tree, Charlotte, NC.

Connect



Highlights from participants in the NBA Advocacy & Activism and NBA Prison & Jail Ministries Peer Groups.

“Prison and jail ministry can be lonely...This is about having a group of people where you can come and share, to talk about your journeys, your experiences. We may not always agree on the ‘what’ and the ‘how,’ but we do have the same type of passion.”

-Rev. Sharyn Cosby, President, Oklahoma Family Empowerment Center, Tulsa, OK

Watch Peer Group videos and learn more at nbacares.org/prison-and-jail.

The NBA *connects*, resources, and amplifies Disciples health and social service ministries, providing access to a constellation of support and services that help ministries learn, collaborate, and grow stronger.

Peer Learning Groups: Honing Their Craft

Our peer group model is an effective way to help practitioners hone their crafts and find support in the company of colleagues.

From 2016-18, the **Prison and Jail Ministries Peer Group** has connected ministry leaders in a small setting designed to cultivate support, mutual dialogue, spiritual renewal, and learning. This first cohort focused on public narrative—how to share their stories and clearly convey the significant impact of ministries through the context of prisons and jails. The NBA helped participants workshop and prepare their narratives, and then recorded and produced videos with each ministry.

NBA’s mission to “advocate for the well-being of humanity” calls us and our partners to deepen engagement in advocacy and activism. Launching in August 2018, the **Advocacy and Activism Peer Group** will provide opportunities for Disciples to share experience and expertise on social justice issues, explore the theological foundations of social justice, and engage in action and advocacy efforts together. This cohort begins with an in-person gathering in St. Louis, marking and reflecting on the fourth anniversary of Michael Brown’s murder in Ferguson, MO.



“It can be an incredible experience of faith, for you, to encounter the existential wrestlings and wisdom of people who have been incarcerated.”

Rev. Tiffany Curtis, Pastor, First Christian Church, Santa Fe, NM



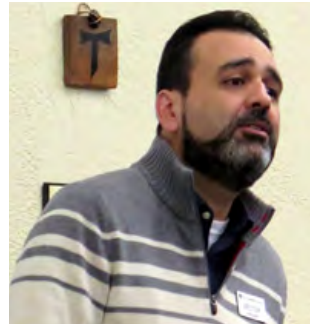
Mental Health Initiative: “The Growing Energy Is Palpable”

The NBA encourages the sustainability and innovation of mental health ministries in congregations, regions, and the general Disciples community.

Through **Hispanic Outreach with Obra Hispana**, we are adapting, implementing, and evaluating mental health ministry with Disciples Hispanic communities. Throughout 2018-19 assemblies and conferences, the Mental Health Initiative will present SoulCare Moments, mental health and wellness workshops, and a bilingual “Train the Trainer” webinar series, featuring topics such as Mental Health 101, How to Manage Crisis/Trauma, Healthy Pastoral Care for Self and Others, and Making Local Connections.

The **Georgia Mental Health Initiative** has provided education, support, and infrastructure development to pastors and congregations in Georgia. Over this 2016-18 pilot program, the NBA and Georgia Region have worked together to engage clergy through town hall meetings, workshops, and a comprehensive survey; implement a strong leadership structure and onboard team participants; and prepare for the sustainability of this ongoing regional ministry.

Find Mental Health Initiative videos and other resources at nbacares.org/mental-health.



Highlights from the NBA Mental Health Initiative, focusing on Hispanic Outreach and with the Georgia Region.

“Involvement in the Georgia Mental Health Initiative forges together parts of my identity that too long have been disparate: my spirituality and passion for mental health/wellness. The growing energy on this topic in the region is palpable! I excitedly await the ways in which this work evolves, taking shape and expanding in the years to come.”

Terry Crump, Ph.D., Licensed Clinical Psychologist and Owner of Crump Wellness Services, Marietta, GA

Partner Directory



The NBA continues to support a rich network of Disciples-related health and social service ministries. Our goals are to connect, resource, and amplify these ministries as they serve as the “hands and feet of God” in their communities. Learn more and get involved at nbacares.org/directory!

West

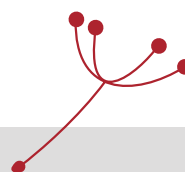
| | |
|----------------------------------|-----------------|
| All Peoples Community Center** | Los Angeles, CA |
| Christian Church Homes | Oakland, CA |
| Oakland Peace Center* | Oakland, CA |
| Recovery Café San Jose* | San Jose, CA |
| Serra Center | Union City, CA |
| SquareOne Villages | Eugene, OR |
| Tennyson Center for Children | Denver, CO |
| UrbanMission Community Partners* | Pomona, CA |
| Yakama Christian Mission** | White Swan, WA |

Southwest

| | |
|---|-------------------|
| Chain Reaction Ministries | Houston, TX |
| Disciple Homes Management Group | Gladewater, TX |
| Disciples Retirement Community of Oklahoma | Oklahoma City, OK |
| Inman Christian Center** | San Antonio, TX |
| Juliette Fowler Communities | Dallas, TX |
| Manistee Manor Apartment Homes | Glendale, AZ |
| Oklahoma Family Empowerment Center* | Tulsa, OK |
| Reach Beyond Mission* | Austin, TX |
| SHARE (Sharing Hands, A Respite Experience) | Midland, TX |
| Southwest Good Samaritan Ministries** | Los Fresnos, TX |
| Tulsa’s Table, a project of StoneSoup Community Venture, Inc.* | Tulsa, OK |

* NBA Incubate Initiative Affiliate Ministries

** Disciples Home Missions (DHM) Mission Centers





Midwest

Child Saving Institute
Cleveland Christian Home
Columbia Area Older Adult Ministry
Hiram Farm
Kansas Christian Home**
Patchwork Central / Sozo Health Ministry
Woodhaven

Omaha, NE
Cleveland, OH
Columbia, MO
Hiram, OH
Newton, KS
Evansville, IN
Columbia, MO



Northeast

Live in Hope Foundation
Safe Haven Day Shelter

Philadelphia, PA
Falls Church, VA



Southeast

A Small Hand
Christian Care Communities
Christian Services for Children in Alabama
Florida Christian Center
HER Faith Ministries*
Kentucky Appalachian Ministry**
New Communion
Mission Behind Bars and Beyond*
QC Family Tree*
Southern Christian Services for
Children and Youth
The Summit
Urban Spirit**

Edinburg, VA
Louisville, KY
Selma, AL
Jacksonville, FL
Memphis, TN
Berea, KY
Winston-Salem, NC
Louisville, KY
West Charlotte, NC
Jackson, MS



Puerto Rico

Garden of Eden Health Center

Jayuya, PR



Photos: In March 2018, we visited several ministry partners across Texas, Ohio, and California with General Minister and President Rev. Terri Hord Owens.

Visit nbacares.org/events/nba-ogmp for more photos, video highlights, and reflections from the road!

Financials



Disciples Mission Fund

We are deeply grateful for the financial support we receive from Disciples congregations, women’s groups, and individuals through Disciples Mission Fund (DMF). DMF continues to be our single largest source of funding (nearly \$250,000 a year), given directly to provide for the mission and ministries that you read about here. Your gifts make a difference!

Financial Report

In accordance with the bylaws of the Christian Church (Disciples of Christ) and with guidelines established by the American Institute of Certified Public Accountants, the NBA’s consolidated financial records are audited by independent auditors. Below is a snapshot of our 2017 financials. For a full audit report, go to nbacares.org/financials.



Planned Giving through Christian Church Foundation

As a ministry called to respond to the daily needs of neighbors and communities in our midst, we are thankful for the “clouds of witnesses” and donors who remembered the NBA with planned gifts. Their foresight and generosity embody a faith that values investing in the future. We give thanks for the partnership of the Christian Church Foundation and their support to steward the many endowed funds, charitable gift annuities, and legacy gifts that help make possible the health and social service ministries of NBA today.

Blessing Boxes

A special thanks to the many leaders and members of Disciples Women’s groups—more than 390—who support NBA and the wider church through the Blessing Box offerings! Your generosity inspires us, and we are strengthened by your daily prayers.

National Benevolent Association of the Christian Church (Disciples of Christ)

STATEMENT OF FINANCIAL POSITION AT DECEMBER 31, 2017 (Dollars in Thousands)

| ASSETS | | LIABILITIES | |
|--------------------------------|-----------------|---|-----------------|
| Cash and investments | \$78,905 | Accounts payable and accrued expenses | \$273 |
| Bequests and other receivables | \$165 | Note payable to affiliate | \$365 |
| All other assets | \$913 | Due to affiliated organizations | \$4,392 |
| Total Assets | \$79,983 | Annuity obligations, trust funds, and other liabilities | \$5,363 |
| | | Total Liabilities | \$10,393 |
| NET ASSETS | \$69,590 | | |

Donors

In 2016-17, Disciples gave generously to create the **Rev. Dr. Ben Bohren NBA Leadership Fund** through the Christian Church Foundation (CCF). You've helped us raise more than \$50,000—in honor of Ben's 50+ years of ministry—which will ensure programs supporting leadership development, like NBA XPLOR, will continue to be part of NBA.

We are deeply thankful for all of you!



Rev. Dr. Ben Bohren NBA Leadership Fund: 2016 – 2017

Individuals

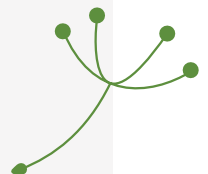
Gregory Alexander
Mark D. Anderson
Bill Bailey
Rebecca and Brad Barry
Ben Bohren
Susan Bowman
Jackie Compton Bunch
Pat and George Burris
Jabari and Naomi Butler
Molly and Michael Carson
Dani Loving Cartwright and David Cartwright
Patricia Case and Lori Adams
Cliff Cole
Bob and Judy Cooper
Roger and Barbara Davidson
Bob Dugan and Justin Aldrich
April Eppolito
Shirley Estes
Marla Fain
Marilyn and Norman Fiddmont
Loring and Barb Fiske Phillips
Sheryl Fitzpatrick
Ruth Fletcher
Richard Follett
Jacquelyn Foster and David Boger
Diane Frances
Vernon Fuller
William and Lourdes Garcia
Daphne Gascot Arias and Jose Morales
Susie and Ray Gearing
Yvonne Gilmore
Stephen and Sharon Ginn

Susan Gonzales-Dewey and Don Dewey
Rebecca Hale
Rebecca Hall
Madeline Haraway
Tom Harshman and Stan Gwyn
Cindy and Steve Hengst
Heather Hennessey
Karl E. and Lisa Holderle
Nora Jacob
Mary and Bill Jacobs
Belva Brown Jordan
Jeanne Karpenko
Angela Kaufman
Joseph and Ariel Kidwell
Steve and Susan Lacey
Virzola Law
Greg and Nancy Lear
Lisa Legeer
Lillian Lewis
April Lewton and Garry Sparks
Norman and Judi Linville
Larry and Nancy Love
Billy Lynch
Mary Sue Malotte
Darrel Manson
Steven and Debra Martin
Bea and Dave Meeker
Deborah Morgan Stokes and Don Stokes
Mary Ryan and Terry Newcomb
Marylyn and Dale Owens
C. Mark and Debra Palmer
Robert and Nancy Patterson
Edgar and Janet Peck

Sabrina and Joel Porter
Jim and Peggy Powell
Margaret Pride
Suzanne Quenette and Keith Smith
Michael Readinger
John Richardson
Tamara and John Rodenberg
Lori Saunders
Mary Lou Savage
Barbara Scamman and Laurie Rudel
Rose Scamman
Edd and Mary Pat Spencer
Robert and Salli Fai Stockton
Kerry and Timothy Swindle
Sue Tarleton
Judy Thorndyke and Ed Barlow
Ruth and Tim Tiffany
Beau and Casey Underwood
Kathy and Craig Vail
Suzanne Webb
Gary and Jeanette White
Leon and Linda Whitney
Bruce and Ann Willard
Diane Wilson
Cathy Myers Wirt and Doug Wirt
Geunhee and Geunsoon Yu
Kasi and Craig Zieminski
Gary Zimmerman

Congregations

First Christian Church of North Hollywood
First Christian Church, Visalia
Union Avenue Christian Church



Donors

The community of individuals, families, congregations, and legacy donors listed here makes our mission possible. In 2017, the NBA commemorated **130 years of Disciples ministry**, and many of you made special gifts celebrating this milestone! Whether it was committing to give \$13 a month, or making gifts of \$130 or more, we are so thankful for the ways you honored NBA's past by strengthening the foundation for our future.

Annual Fund: 2017

Individuals

Al Adams
Carolyn Allen
Jeanne Anderson
Mark D. Anderson
Laurie Anderson
Shirley Arther and Colleen Vunkannon
C. William and Laura Bailey
Phyllis Blackwood
Jordan and Robyn Bles
Ralph and Lisa Blevins
Richard and Emily Boeshaar
Ben Bohren
Deborah Bolen
Bill and Martha Boyle
Renee and Stephen Bridwell
Jamila and Dietrick Brockett
Richard Brooks
Ned and Mary Brown
Dean and Anne Bucalos
Mari Buchtel
Arthur and Betty Buell
Jackie Compton Bunch
Don Burns
Janice Burns-Watson
Pat and George Burris
Jabari and Naomi Butler
Rudy Calizo, Jr.
Dani Loving Cartwright and David Cartwright
Abby Catoe
Jill Cederburg
Audrey Chambers
Larry and Darrell Christensen
Patricia Clark
Elizabeth Cooley
Mary and Tom Cooley
In honor of Claire Cooley
Bob and Judy Cooper
Theodore and Margaret Coulter
Danielle Cox
Sidney Crouch
Tiffany Curtis
Jo and Jon Daniel
Jennifer Darnell
Roger and Barbara Davidson

Mae Davis
William and Barbara Deutsch
Clarence and Linda Diedriech
Donna DiPaolo-Alexander
Mary Alice Do
Debbie Dobbins
Sue Dulaney
Rebecca Duncan
Lesley Durham
Tommy Evans
Laurie Feille
Bob and Lynda Fickes
Marilyn and Norman Fiddmont
Jennifer Force
Jacquelyn Foster and David Boger
Nancy Fowler
Donald and Diane Gaffney
Jon Gaffney
Sarada Galindo
William and Lourdes Garcia
Daphne Gascot Arias and Jose Morales
Virginia Greeley
Betty Grimes
Larry and Carol Grimes
Laura Guy
Gale and Marcia Hagee
Rebecca Hale
Gwen Hampton-Braniecki
In honor of Florissant Valley Christian Church Deborah Circle
Allen Harris
In honor of Robert Perry
Earnest Harris
Michelle and Matthew Harris-Gloyer
Walter* and Evelyn Haskell
Cindy and Steve Hengst
Héctor and Lorna Hernández
Charles Herrick
David Heym
Nathan Higginbotham
Laurie Holcomb
Karl E. and Lisa Holderle
Charlotte Hoppe
Lou Ann Hughes
Hazel Hunt
Megan Huston

Nora Jacob
In honor of NBA Prison and Jail Ministries Staff
Micah James
Marjory Janssen
In memory of Bob and Eura Merriam
Bill and Debbie Jennison
Clarence Johnson
Mary Jones
In memory of Paul Jones
Richard Jones and Linda Wallace
Stacey Jones
Becky and Kevin Jones
John Jordan
JoAnne Kagiwada
Mary Lou Kegler
Joseph and Ariel Kidwell
Monica Wedlock Kilpatrick and Jonathan Kilpatrick
Rick Koelz
Christie Koetting
Linda Krog
Lynn Lackey
Janice Lance
Greg and Nancy Lear
Kimberly Lenington
April Lewton and Garry Sparks
Tiffany and Matthew Limback
Norman and Judi Linnville
Al and Tanya Lopez
Bryan and Margaret Lott
Nancy Love
Eleanor Manning
John and Jeannine May
Virginia McCoy
Mary McElroy
Bea and Dave Meeker
Donald and Margaret Merritt
Sandy Messick
Brenda Mikota
David Mill
In honor of Kaye Edwards
Suzie Moore
Mark and Lisa Moreland
Deborah Morgan Stokes and Don Stokes
Larry J. Morris, III



"We are ever grateful for your many gifts of support, and for all the ways you join NBA in creating communities of compassion and care!"

Jackie Compton Bunch, Chair, NBA Board of Trustees, Columbus, OH



Sue Morris
In honor of John Gottschalk
Russell and Mary Morrow
Carla Nelson
Don and Nancy Niederhauser
Jerry and Shannon Norris
John and Eleanor Norris
Andrew Olree
Ben Omlid
Bonnie and Irami Osei-Frimpong
Deborah Owen
In honor of Bonnie Osei-Frimpong
Randall Palmer
John Patterson
Diana Payton
Darren Phelps
Sophia Phillips-McNairy
Alcee Polk
Sabrina and Joel Porter
Suzanne Quenette and Keith Smith
Gerald and Susan Ramsey
In memory of Jim Ross
Michael Readinger
K.J. Reynolds
Jackie and Don Riggenschach
In memory of Mr. and Mrs. Paul Riggenschach
David and Diana Rodriguez
In memory of Blanca Rodriguez
Alicia Rodriguez
Cheryl Roy
Mildred Ruff*
Katie Russell
Erin Sack
Elaine Sanford
Barbara Scamman and Laurie Rudel
Lois and Oscar Simpson
Louise Sloan-Goben and Galen Goben
Roy Smith
Eric Smith
Sarah Smith
Christopher and Jennifer Snow
Garry and Pamela Sparks
In honor of April Lewton
Wayne Sparrow
Marti and Travis Stanley
Sara and Felicia Steenhouse
Martine Stephens
Cynthia and Larry Stinson
Robert and Salli Fai Stockton
Doris Stubits*
Jackie Summers
Kerry and Timothy Swindle
Cecil Terry
Judy Thorndyke and Ed Barlow
Daniel and Bobbie Thuma
James Tilsley

Robert Trent
Judith Troxler
Rodney and Mary Frances Vance
Joel VanderVeen
Joanne VerBurg
Annette Wallace*
Wayne and Norma Warren
Ayanna Johnson Watkins and Rich Watkins
Sharon Watkins and Rick Lowery
Bethany Watkins Lowery
Suzanne Webb
Daniel and Nel Webster
In honor of First Christian Church, Gainesville, Florida
Katherine Webster
Gary and Jeanette White
Kara Whitehouse
William Whitehurst, Jr.
Angela Whitenhill
Leon and Linda Whitney
Harold* and Evelyn Wilkerson
Linda Williams
Cathy Myers Wirt and Doug Wirt
In honor of Joyce Myers and Charlotte Wirt
Jan Witherington
Alicia Wright
John and Sylvia Wright
Spencer Yancey*
Kasi and Craig Zieminski
Gary Zimmerman

**Deceased*

Congregations/Foundations/Organizations

Amazon Smile
Theodore and Beulah Beasley Foundation
Bethel Christian Church
Central Christian Church, Higginsville
Central Christian Church, San Diego
Christian Church in Alabama and Northwest Florida

Christian Church Foundation
Christian Church of the Pacific Southwest
Community Christian Church
Disciples Home Missions
Disciples Seminary Foundation
First Christian Church, Griffin
First Christian Church, Kirksville
First Christian Church, Nampa
First Christian Church of North Hollywood
First Christian Church, Scottsdale
First Christian Church, Visalia
Fountain Family Foundation
Forum for Theological Exploration
Midway Church, Paris
North Chevy Chase Christian Church
Overland Christian Church
Oreon E. Scott Foundation
South Joplin Christian Church
Southwest Good Samaritan Ministries
Spencer, Fane, Britt, & Browne LLP
St. Charles Christian Church Christian Women's Fellowship
Swope Parkway United Christian Church
Vine Street Christian Church
Woodland Christian Church, Columbus

Endowed Funds/Bequests/Trusts

Carl and Pansey Larson Memorial
Ferne E. Elton Estate
John Charles Leber Memorial Fund
Kathryn Plopper and Ray E. Shorb Restricted Gift Agreement
Mary Cecile Forehand Estate
Mary Redford Franklin Memorial Trust
Maurice Radamacher Fund
Raymond and Grace Schmidt Trust
Sarah E. Wilson Family Memorial Fund
Sylvester Hunt Charitable Trust

For any questions about gifts to the NBA, please contact nba@nbacares.org or (314) 993-9000 ext. 5479. Thank you!

**We invite you to be part of our shared work!
Your gifts help support Disciples health and social services across the life of the church.**

Learn more and make your gift today at nbacares.org/donate.

Thank you for your generosity!



Board of Trustees



Voting Members

Ms. Jackie Compton Bunch, Chair

Columbus, Ohio
Educator/Retired

Mr. Bob Cooper, Vice Chair

Denver, Colorado
Nonprofit Executive/Retired

Rev. Mary Lou Kegler, Secretary

Kansas City, Missouri
Health and Human Services/Retired

Mr. Bill Jennison, Treasurer

Spokane, Washington
Attorney/Retired

Ms. Cindy Kim Hengst, At Large

Chicago, Illinois
Healthcare Professional

Rev. Jabari Butler

Atlanta, Georgia
President, CIO Services Group
Principal, Adanisy LLC

Mr. Alex Cooper

Cleburne, Texas
Customer Service,
First Financial Bank, N.A.

Mr. Willie Garcia

Yonkers, New York
Finance/Retired

Rev. Dr. Jacquie Foster

St. Louis, Missouri
Pastor, Compton Heights
Christian Church

Ms. Audrey Jackson

Cleveland, Ohio
Controller, Portfolio Companies,
Peppertree Capital Management, Inc

Mrs. Ariel Kidwell

Dallas, Texas
Studio Manager, Good Work

Ms. Lisa Legeer

Jacksonville, Florida
Senior Manager,
Dixon Hughes Goodman LLP

Mr. Cristian Marin

Eureka, Illinois
Student, Eureka College

Rev. Darren Phelps

Washington, D.C.
Senior Pastor, Bethel
Christian Church

Ms. Sabrina Porter

Dallas, Texas
President and CEO, Juliette Fowler
Communities

Ms. Suzanne Quenette

Austin, Texas
Psychotherapist

Rev. Orlando Scott

Norcross, Georgia
Chaplain, Gwinnett Medical Center

Ex-Officio with Vote

Mr. Mark D. Anderson

St. Louis, Missouri
President and CEO,
National Benevolent Association

Ex-Officio without Vote

Rev. Terri Hord Owens

Indianapolis, Indiana
General Minister and President,
Christian Church (Disciples of Christ)
in the United States and Canada

Mr. Michael Readinger

Cleveland, Ohio
President and CEO,
Council for Health and Human
Service Ministries (CHHSM)
United Church of Christ



We are thankful for the leadership and service of the following individuals who have completed their terms with the NBA Board of Trustees since 2016:

Rev. Daphne Gascot Arias
Mr. Robert Patterson
Ms. Barbara Scamman

Dr. Kerry Swindle
Rev. Dr. Suzanne Webb
Rev. Dr. Cathy Myers Wirt

Staff



Mr. Mark D. Anderson
President and CEO

Rev. Dr. Dietra Wise Baker
Program Coordinator for
NBA Advocacy and Activism

Mr. Jordan Bles
Director of Development

Rev. Dr. Ben Bohren*
Mission Specialist
NBA XPLOR

Rev. Dean Bucalos*
Mission Specialist
NBA Prison and Jail Ministries

Rev. Dani Loving Cartwright
Vice President of Operations

Ms. Nadine Compton*
NBA Mission and Ministry Grants
Administrative Support

Ms. Lesley Durham
Director of Operations Accounting

Rev. Rebecca Hale
Executive Vice President

Rev. Héctor J. Hernández*
Peer Group Convener
NBA Prison and Jail Ministries
Hispanic Outreach Coordinator
NBA Mental Health Initiative

Rev. Monica Wedlock Kilpatrick
Director of NBA Connect Ministries

Ms. L. Christine Koetting
Associate Vice President of
Accounting

Rev. Virzola Law*
Mission Specialist
NBA XPLOR

Rev. April Lewton
Vice President of Development
and Marketing

Mr. Larry J. Morris, III
Program Associate
NBA Incubate Initiative

Rev. Bonnie Osei-Frimpong
Director of NBA XPLOR

Rev. Ayanna Johnson Watkins
Director of the NBA Incubate Initiative

Ms. Kara Whitehouse
Executive Support Manager

Ms. Angela Whitenhill
Manager
NBA Mental Health Initiative


Ms. Kasi Zieminski
Director of Marketing


Mr. Gary Zimmerman
Vice President of Administration
and CFO


* Contract Consultant Staff


ENGAGE WITH THE NBA!


- Sign up for our monthly eNewsletter
- Follow our latest stories and news
- Join us at events throughout the year
- Learn more about our ministry partners
- Make a gift to NBA ministries!


 nbacares.org

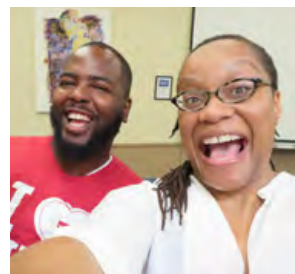
 (314) 993-9000

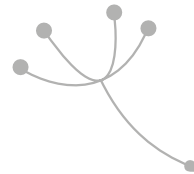
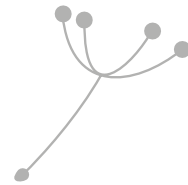
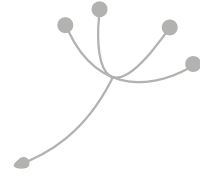
 733 Union Blvd., Suite 300,
St. Louis, MO 63108

 @nbadisciples

 @nbadisciples

 /NationalBenevolent
Association





National
Benevolent
Association
of the Christian Church (Disciples of Christ)